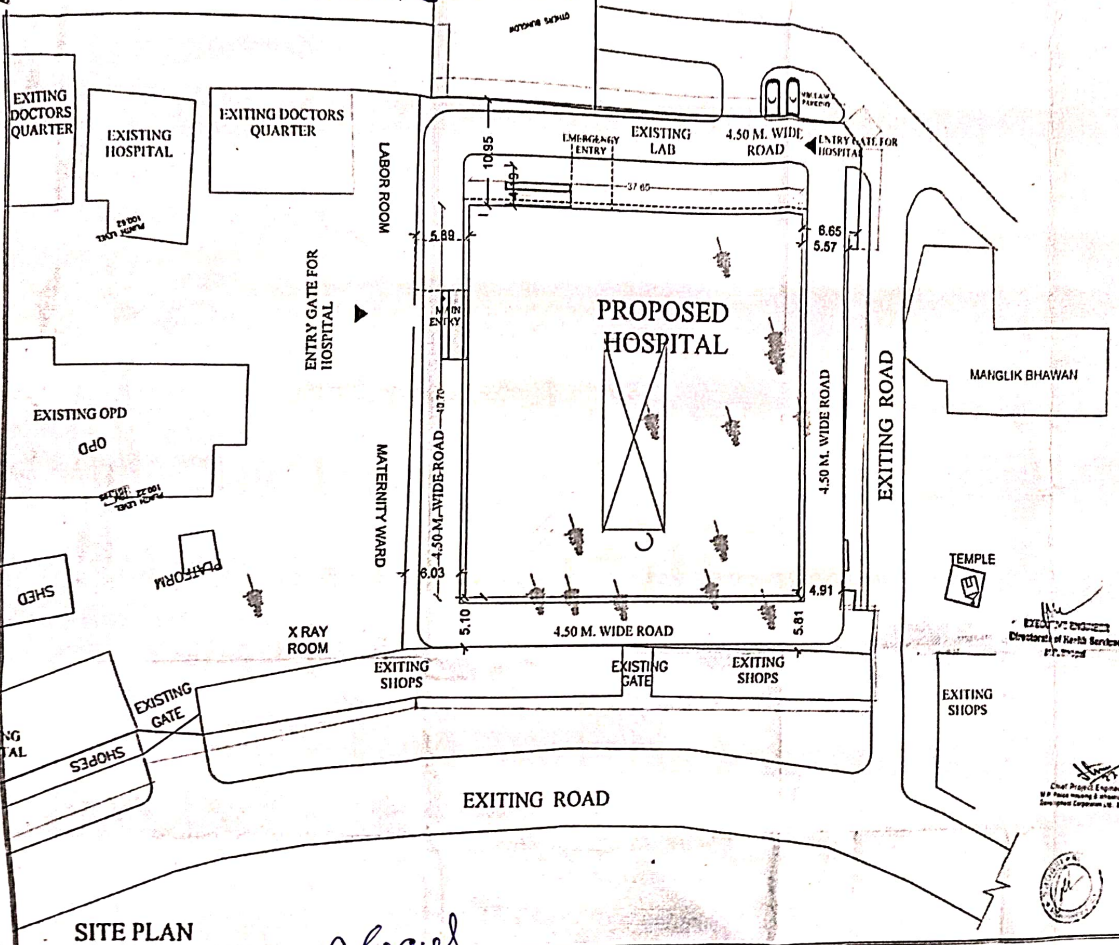


प्रश्न सं. [क. 1036]

विद्यालय नकल नं. 1036 के अन्तर्गत "ग" अ-परिचित-क
 प्रस्तावित नम-जीओडीएल-क
 सन 31-3-2025 के 14-15-13.05.2025

पेज 03 नु 1



PROPOSED 50 BEDDED CIVIL HOSPITAL, SUSNER, DIST. - AGARMALWA, M.P.

APPROVAL	DATE

NOTE:
 1. The site plan is prepared on the basis of the site plan submitted by the applicant.
 2. The site plan is prepared on the basis of the site plan submitted by the applicant.
 3. The site plan is prepared on the basis of the site plan submitted by the applicant.
 4. The site plan is prepared on the basis of the site plan submitted by the applicant.
 5. The site plan is prepared on the basis of the site plan submitted by the applicant.

PROJECT
 PROPOSED 50 BEDDED CIVIL HOSPITAL, SUSNER, DIST. - AGARMALWA, M.P.

DRAWING TITLE: SITE PLAN
DRG. NO.: RSA / PND / SUSNER / SP-01
DATE: 01-04-2022 **SCALE:**

DESIGNED BY: **DATE:** **SCALE:** **NORTH**

ALL DIMENSIONS ARE IN METERS

PROBABLE APPROVALS

Chief Project Engineer
 M.P. Road Planning & Information
 Government Corporation Ltd. Bhopal

Alia
 कार्यपालन यंत्रो
 संकलनस्व लोक स्वास्थ्य एवं विफित्तन विभाग
 पोखरा

प्लान 01 से 03 तक (2)

PROPOSED 50 BEDDED CIVIL HOSPITAL
SUSNER, DIST. - AGARMALWA, M.P.

SCHEDULE OF DOOR'S OPENING

S. NO.	TYPE	SIZE	DESCRIPTION
1	D	2.4x2.4	ALUM GLASS DOOR
2	D1	1.5x2.4	FLUSH DOOR
3	D1	2.1x2.4	ALUM GLASS DOOR
4	D2	1.5x2.1	FLUSH DOOR
5	D3	1.2x2.4	FLUSH DOOR
6	D4	1.2x2.1	ALUM GLASS DOOR
7	D4	1.2x2.1	FLUSH DOOR
8	D4	2.4x2.1	FLUSH DOOR
9	D5	0.9x2.1	ALUM GLASS DOOR
10	D6	2.8x2.1	FLUSH DOOR
11	D7	1.1x2.1	FLUSH DOOR (SING. DOOR)
12	DM	1.8x2.4	FLUSH DOOR/MEDICAL DOOR
13			

SCHEDULE OF WINDOW'S OPENING

S. NO.	TYPE	SIZE	DESCRIPTION
1	W1	1.2x1.4	ALUM WINDOW
2	W2	1.2x1.4	ALUM WINDOW
3	W3	1.2x1.4	ALUM WINDOW
4	W4	1.2x1.2	ALUM WINDOW
5	W5	1.2x1.2	ALUM WINDOW
6	W6	1.2x1.2	ALUM WINDOW
7	W7	1.2x1.2	ALUM WINDOW
8	W8	1.2x1.2	ALUM WINDOW
9	W9	1.2x1.2	ALUM WINDOW
10	W10	1.2x1.2	ALUM WINDOW
11	W11	1.2x1.2	ALUM WINDOW
12	W12	1.2x1.2	ALUM WINDOW
13	W13	1.2x1.2	ALUM WINDOW
14	W14	1.2x1.2	ALUM WINDOW
15	W15	1.2x1.2	ALUM WINDOW
16	W16	1.2x1.2	ALUM WINDOW
17	W17	1.2x1.2	ALUM WINDOW
18	W18	1.2x1.2	ALUM WINDOW
19	W19	1.2x1.2	ALUM WINDOW
20	W20	1.2x1.2	ALUM WINDOW
21	W21	1.2x1.2	ALUM WINDOW
22	W22	1.2x1.2	ALUM WINDOW
23	W23	1.2x1.2	ALUM WINDOW
24	W24	1.2x1.2	ALUM WINDOW
25	W25	1.2x1.2	ALUM WINDOW
26	W26	1.2x1.2	ALUM WINDOW
27	W27	1.2x1.2	ALUM WINDOW
28	W28	1.2x1.2	ALUM WINDOW
29	W29	1.2x1.2	ALUM WINDOW
30	W30	1.2x1.2	ALUM WINDOW
31	W31	1.2x1.2	ALUM WINDOW
32	W32	1.2x1.2	ALUM WINDOW
33	W33	1.2x1.2	ALUM WINDOW
34	W34	1.2x1.2	ALUM WINDOW
35	W35	1.2x1.2	ALUM WINDOW
36	W36	1.2x1.2	ALUM WINDOW
37	W37	1.2x1.2	ALUM WINDOW
38	W38	1.2x1.2	ALUM WINDOW
39	W39	1.2x1.2	ALUM WINDOW
40	W40	1.2x1.2	ALUM WINDOW
41	W41	1.2x1.2	ALUM WINDOW
42	W42	1.2x1.2	ALUM WINDOW
43	W43	1.2x1.2	ALUM WINDOW
44	W44	1.2x1.2	ALUM WINDOW
45	W45	1.2x1.2	ALUM WINDOW
46	W46	1.2x1.2	ALUM WINDOW
47	W47	1.2x1.2	ALUM WINDOW
48	W48	1.2x1.2	ALUM WINDOW
49	W49	1.2x1.2	ALUM WINDOW
50	W50	1.2x1.2	ALUM WINDOW

SCHEDULE OF VENTILATOR'S OPENING

S. NO.	TYPE	SIZE	DESCRIPTION
1	V1	2.1x1.5	ALUM VENTILATOR
2	V2	2.1x1.5	ALUM VENTILATOR
3	V3	2.1x1.5	ALUM VENTILATOR
4	V4	2.1x1.5	ALUM VENTILATOR
5	V5	2.1x1.5	ALUM VENTILATOR
6	V6	2.1x1.5	ALUM VENTILATOR
7	V7	2.1x1.5	ALUM VENTILATOR
8	V8	2.1x1.5	ALUM VENTILATOR
9	V9	2.1x1.5	ALUM VENTILATOR
10	V10	2.1x1.5	ALUM VENTILATOR
11	V11	2.1x1.5	ALUM VENTILATOR
12	V12	2.1x1.5	ALUM VENTILATOR
13	V13	2.1x1.5	ALUM VENTILATOR
14	V14	2.1x1.5	ALUM VENTILATOR
15	V15	2.1x1.5	ALUM VENTILATOR
16	V16	2.1x1.5	ALUM VENTILATOR
17	V17	2.1x1.5	ALUM VENTILATOR
18	V18	2.1x1.5	ALUM VENTILATOR
19	V19	2.1x1.5	ALUM VENTILATOR
20	V20	2.1x1.5	ALUM VENTILATOR
21	V21	2.1x1.5	ALUM VENTILATOR
22	V22	2.1x1.5	ALUM VENTILATOR
23	V23	2.1x1.5	ALUM VENTILATOR
24	V24	2.1x1.5	ALUM VENTILATOR
25	V25	2.1x1.5	ALUM VENTILATOR
26	V26	2.1x1.5	ALUM VENTILATOR
27	V27	2.1x1.5	ALUM VENTILATOR
28	V28	2.1x1.5	ALUM VENTILATOR
29	V29	2.1x1.5	ALUM VENTILATOR
30	V30	2.1x1.5	ALUM VENTILATOR
31	V31	2.1x1.5	ALUM VENTILATOR
32	V32	2.1x1.5	ALUM VENTILATOR
33	V33	2.1x1.5	ALUM VENTILATOR
34	V34	2.1x1.5	ALUM VENTILATOR
35	V35	2.1x1.5	ALUM VENTILATOR
36	V36	2.1x1.5	ALUM VENTILATOR
37	V37	2.1x1.5	ALUM VENTILATOR
38	V38	2.1x1.5	ALUM VENTILATOR
39	V39	2.1x1.5	ALUM VENTILATOR
40	V40	2.1x1.5	ALUM VENTILATOR
41	V41	2.1x1.5	ALUM VENTILATOR
42	V42	2.1x1.5	ALUM VENTILATOR
43	V43	2.1x1.5	ALUM VENTILATOR
44	V44	2.1x1.5	ALUM VENTILATOR
45	V45	2.1x1.5	ALUM VENTILATOR
46	V46	2.1x1.5	ALUM VENTILATOR
47	V47	2.1x1.5	ALUM VENTILATOR
48	V48	2.1x1.5	ALUM VENTILATOR
49	V49	2.1x1.5	ALUM VENTILATOR
50	V50	2.1x1.5	ALUM VENTILATOR

GENERAL STATEMENTS

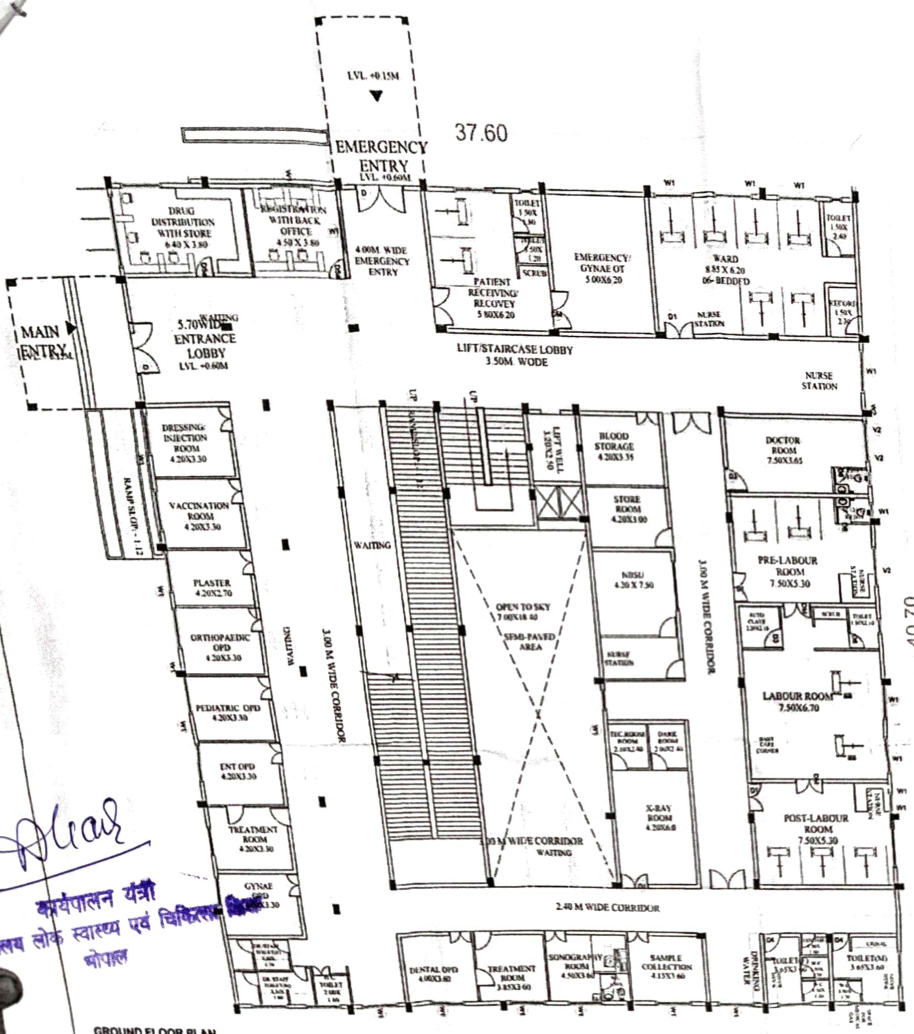
FLOOR AREA	1147.00 SQ. M.
COVERED AREA	1147.00 SQ. M.
FIRST FLOOR	1147.00 SQ. M.
MURPHY	1147.00 SQ. M.
TOTAL AREA	1147.00 SQ. M.

NOTE:-
1. ALL DIMENSIONS ARE TO FACE UNLESS OTHERWISE SPECIFIED.
2. ALL DIMENSIONS ARE TO FACE UNLESS OTHERWISE SPECIFIED.
3. ALL DIMENSIONS ARE TO FACE UNLESS OTHERWISE SPECIFIED.
4. ALL DIMENSIONS ARE TO FACE UNLESS OTHERWISE SPECIFIED.
5. ALL DIMENSIONS ARE TO FACE UNLESS OTHERWISE SPECIFIED.
6. ALL DIMENSIONS ARE TO FACE UNLESS OTHERWISE SPECIFIED.
7. ALL DIMENSIONS ARE TO FACE UNLESS OTHERWISE SPECIFIED.
8. ALL DIMENSIONS ARE TO FACE UNLESS OTHERWISE SPECIFIED.
9. ALL DIMENSIONS ARE TO FACE UNLESS OTHERWISE SPECIFIED.
10. ALL DIMENSIONS ARE TO FACE UNLESS OTHERWISE SPECIFIED.
11. ALL DIMENSIONS ARE TO FACE UNLESS OTHERWISE SPECIFIED.
12. ALL DIMENSIONS ARE TO FACE UNLESS OTHERWISE SPECIFIED.
13. ALL DIMENSIONS ARE TO FACE UNLESS OTHERWISE SPECIFIED.
14. ALL DIMENSIONS ARE TO FACE UNLESS OTHERWISE SPECIFIED.
15. ALL DIMENSIONS ARE TO FACE UNLESS OTHERWISE SPECIFIED.
16. ALL DIMENSIONS ARE TO FACE UNLESS OTHERWISE SPECIFIED.
17. ALL DIMENSIONS ARE TO FACE UNLESS OTHERWISE SPECIFIED.
18. ALL DIMENSIONS ARE TO FACE UNLESS OTHERWISE SPECIFIED.
19. ALL DIMENSIONS ARE TO FACE UNLESS OTHERWISE SPECIFIED.
20. ALL DIMENSIONS ARE TO FACE UNLESS OTHERWISE SPECIFIED.
21. ALL DIMENSIONS ARE TO FACE UNLESS OTHERWISE SPECIFIED.
22. ALL DIMENSIONS ARE TO FACE UNLESS OTHERWISE SPECIFIED.
23. ALL DIMENSIONS ARE TO FACE UNLESS OTHERWISE SPECIFIED.
24. ALL DIMENSIONS ARE TO FACE UNLESS OTHERWISE SPECIFIED.
25. ALL DIMENSIONS ARE TO FACE UNLESS OTHERWISE SPECIFIED.
26. ALL DIMENSIONS ARE TO FACE UNLESS OTHERWISE SPECIFIED.
27. ALL DIMENSIONS ARE TO FACE UNLESS OTHERWISE SPECIFIED.
28. ALL DIMENSIONS ARE TO FACE UNLESS OTHERWISE SPECIFIED.
29. ALL DIMENSIONS ARE TO FACE UNLESS OTHERWISE SPECIFIED.
30. ALL DIMENSIONS ARE TO FACE UNLESS OTHERWISE SPECIFIED.
31. ALL DIMENSIONS ARE TO FACE UNLESS OTHERWISE SPECIFIED.
32. ALL DIMENSIONS ARE TO FACE UNLESS OTHERWISE SPECIFIED.
33. ALL DIMENSIONS ARE TO FACE UNLESS OTHERWISE SPECIFIED.
34. ALL DIMENSIONS ARE TO FACE UNLESS OTHERWISE SPECIFIED.
35. ALL DIMENSIONS ARE TO FACE UNLESS OTHERWISE SPECIFIED.
36. ALL DIMENSIONS ARE TO FACE UNLESS OTHERWISE SPECIFIED.
37. ALL DIMENSIONS ARE TO FACE UNLESS OTHERWISE SPECIFIED.
38. ALL DIMENSIONS ARE TO FACE UNLESS OTHERWISE SPECIFIED.
39. ALL DIMENSIONS ARE TO FACE UNLESS OTHERWISE SPECIFIED.
40. ALL DIMENSIONS ARE TO FACE UNLESS OTHERWISE SPECIFIED.
41. ALL DIMENSIONS ARE TO FACE UNLESS OTHERWISE SPECIFIED.
42. ALL DIMENSIONS ARE TO FACE UNLESS OTHERWISE SPECIFIED.
43. ALL DIMENSIONS ARE TO FACE UNLESS OTHERWISE SPECIFIED.
44. ALL DIMENSIONS ARE TO FACE UNLESS OTHERWISE SPECIFIED.
45. ALL DIMENSIONS ARE TO FACE UNLESS OTHERWISE SPECIFIED.
46. ALL DIMENSIONS ARE TO FACE UNLESS OTHERWISE SPECIFIED.
47. ALL DIMENSIONS ARE TO FACE UNLESS OTHERWISE SPECIFIED.
48. ALL DIMENSIONS ARE TO FACE UNLESS OTHERWISE SPECIFIED.
49. ALL DIMENSIONS ARE TO FACE UNLESS OTHERWISE SPECIFIED.
50. ALL DIMENSIONS ARE TO FACE UNLESS OTHERWISE SPECIFIED.

PROJECT
PROPOSED 50 BEDDED CIVIL HOSPITAL, SUSNER, DIST. - AGARMALWA, M.P.

DRAWING TITLE: GROUND FLOOR PLAN
DRG. NO. - R5A/1/ND/SUSNER/1A2-01
DATE: 11-04-2022 SCALE

DESIGNED BY: [Signature]
CHECKED BY: [Signature]
DATE: [Date]
SCALE: [Scale]



GROUND FLOOR PLAN

Handwritten signature

कर्मपालन यंत्र
संकायलय लोक स्वास्थ्य एवं विकिरण
भोपाल

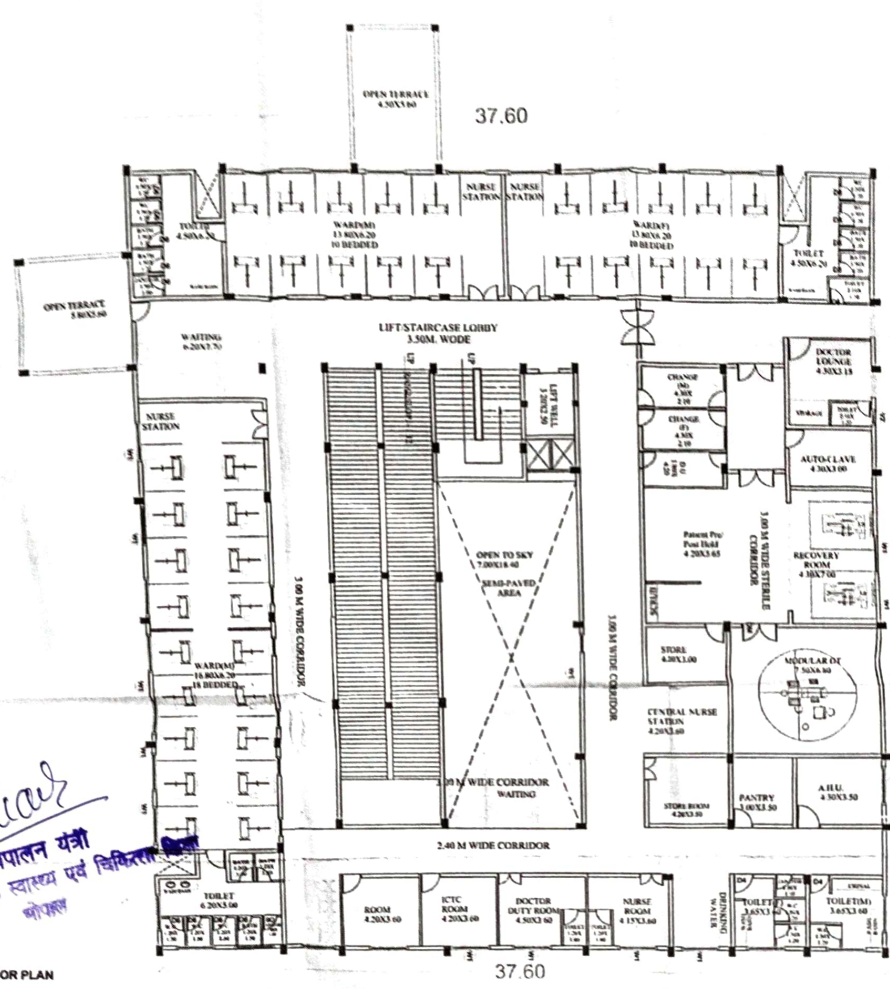
EXECUTIVE ENGINEER
Divisional Health Services
M.P. Hospital

1:100 Scale
M.P. Hospital & Community
Development Corporation, Bhopal



वै ०१ २०३ तम

3



PROPOSED 50 BEDDED CIVIL HOSPITAL, SUSNER, DIST. - AGARMALWA, M.P.

SCHEDULE OF DOOR'S OPENING

S. NO	TYPE	SIZE	DESCRIPTION
1	SI	1.20 X 2.40	ALUM GLASS DOOR
2	SI	1.80 X 2.40	FLOOR DOOR
3	SI	2.10 X 2.40	ALUM GLASS DOOR
4	SI	1.80 X 2.40	FLOOR DOOR
5	SI	1.80 X 2.40	FLOOR DOOR
6	SI	1.80 X 2.40	ALUM GLASS DOOR
7	SI	1.80 X 2.40	FLOOR DOOR
8	SI	1.80 X 2.40	FLOOR DOOR
9	SI	1.80 X 2.40	ALUM GLASS DOOR
10	SI	1.80 X 2.40	FLOOR DOOR
11	SI	1.80 X 2.40	FLOOR DOOR (SPRING DOOR)
12	SI	1.80 X 2.40	FLOOR DOOR (POMEDA DOOR)

SCHEDULE OF WINDOWS OPENING

S. NO	TYPE	SIZE	DESCRIPTION
1	SI	1.20 X 1.20	ALUM WINDOW
2	SI	1.20 X 1.20	ALUM WINDOW
3	SI	1.20 X 1.20	ALUM WINDOW
4	SI	1.20 X 1.20	ALUM WINDOW
5	SI	1.20 X 1.20	ALUM WINDOW

SCHEDULE OF VENTILATOR'S OPENING

S. NO	TYPE	SIZE	DESCRIPTION
1	SI	2.2 X 2.5	ALUM VENTILATOR
2	SI	1.8 X 2.5	ALUM VENTILATOR
3	SI	2.4 X 2.5	ALUM VENTILATOR
4	SI	1.8 X 2.5	ALUM VENTILATOR

STATEMENTS

REPAIRS	AS PER PLAN
WORKING	AS PER PLAN
FINISH	AS PER PLAN
PAINT	AS PER PLAN
FLOOR AREA	207.00 SQ. M

NOTE:-
 1. ALL WORK SHALL BE DONE AS PER THE SPECIFICATIONS AND STANDARDS OF THE GOVERNMENT OF INDIA.
 2. ALL MATERIALS TO BE USED SHALL BE OF THE BEST QUALITY AND SHALL BE SUPPLIED BY THE CONTRACTOR.
 3. ALL WORK SHALL BE DONE AS PER THE PLAN AND SPECIFICATIONS.
 4. ALL WORK SHALL BE DONE AS PER THE PLAN AND SPECIFICATIONS.
 5. ALL WORK SHALL BE DONE AS PER THE PLAN AND SPECIFICATIONS.

PROJECT
PROPOSED 50 BEDDED CIVIL HOSPITAL, SUSNER, DIST. - AGARMALWA, M.P.

DRAWING TITLE: FIRST FLOOR PLAN
DRG. NO. - RSA / IND / SUSNER / FAR-02
DATE: 11-04-2022 **SCALE**

DESIGNED BY: **CHECKED BY:** **NORTH**

ALL DIMENSIONS ARE IN METERS

OFFICIAL ARCHITECTS

EXECUTIVE ENGINEER
 Directorate of Health Services
 M.P. Bhopal

Chief Project Engineer
 M.P. Public Health & Infrastructure
 Development Corporation Ltd. Bhopal



Handwritten signature: **Shree**
 कार्यपालन यंत्र
 विकासनात्मक लोक स्वास्थ्य एवं विकिरण विभाग
 बोझल

FIRST FLOOR PLAN